

SIMPLE LIFE

SIMPLE LIFE



## Milkstone Road, Rochdale, OL11

£1,050

Norwich Green is a development of 70 properties backing onto the Rochdale Canal, surrounded by amenities and transport links.

The Irwell is a stunning home built with you in mind. Entering through the front door you are welcomed by an attractive kitchen with a range of contemporary fitted units and modern integrated appliances.

Heading through the hallway will take you into a spacious living/dining area which is finished with beautiful wooden flooring and French windows which open out onto your private rear garden. The lower floor also benefits from a storage cupboard and WC. Upstairs you will find two spacious double rooms, the master bedroom including a fitted, mirrored wardrobe, whilst the second bedroom benefits from having built in storage space. There is also a main bathroom equipped with a bath and shower.

In the surrounding vicinity of the site are a range of shops including the Rochdale Central Retail Park as well as an Iceland. Leisure activities are within easy reach whether that's the Kingsway Park Sports Centre, or the Odeon cinema, offering a range of activities for both sport and recreation.

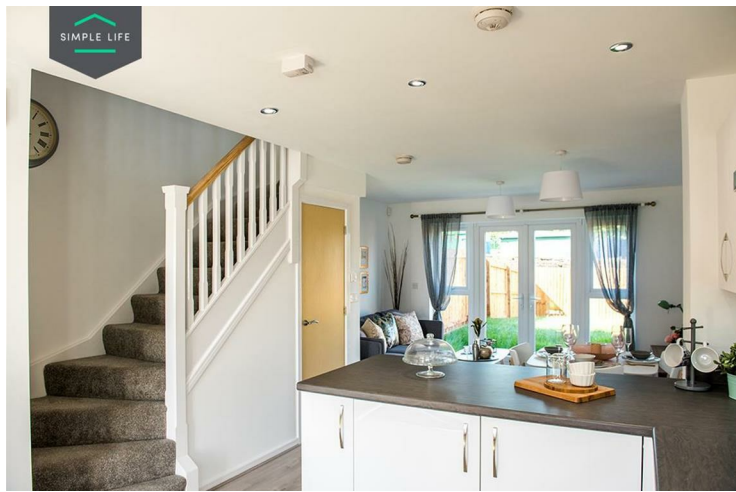
From the development, Rochdale Station and Tram Stop are less than 5 minutes' walk away, opening up access to Manchester City Centre and the wider area.

To visit the site, postcode OL11 1LP brings you to Norwich Street with the site at the end.

Deposit: £1210  
Council Tax: B  
Unfurnished  
Available 21st January 2026







## Key Features

- Private driveway
- Fitted wardrobes to master bedroom
- Fridge freezer
- Oven and hob
- Dark ash style worktops
- Security alarm system
- Dishwasher
- Washing/drying machine
- Light wash wood effect flooring
- Modern, white kitchen units

## Location

